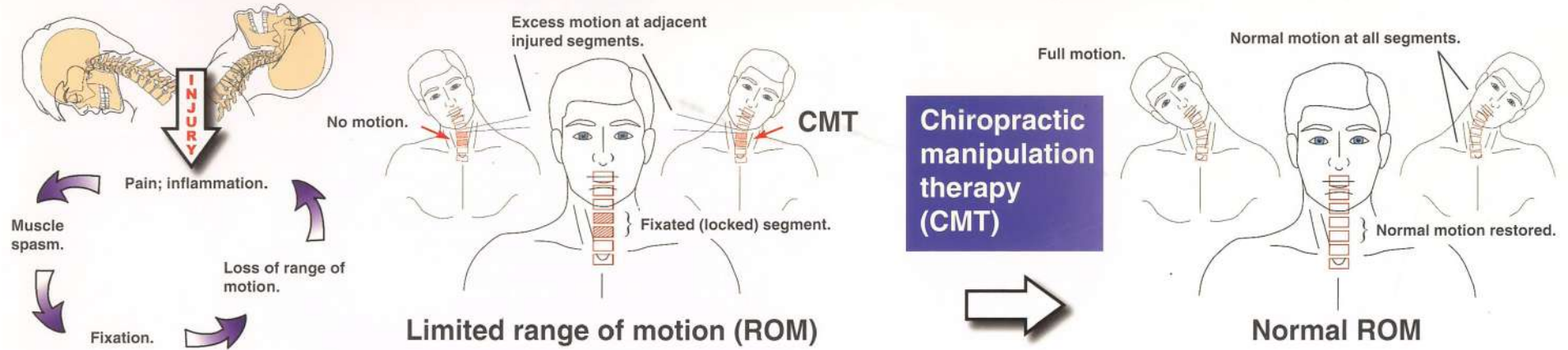
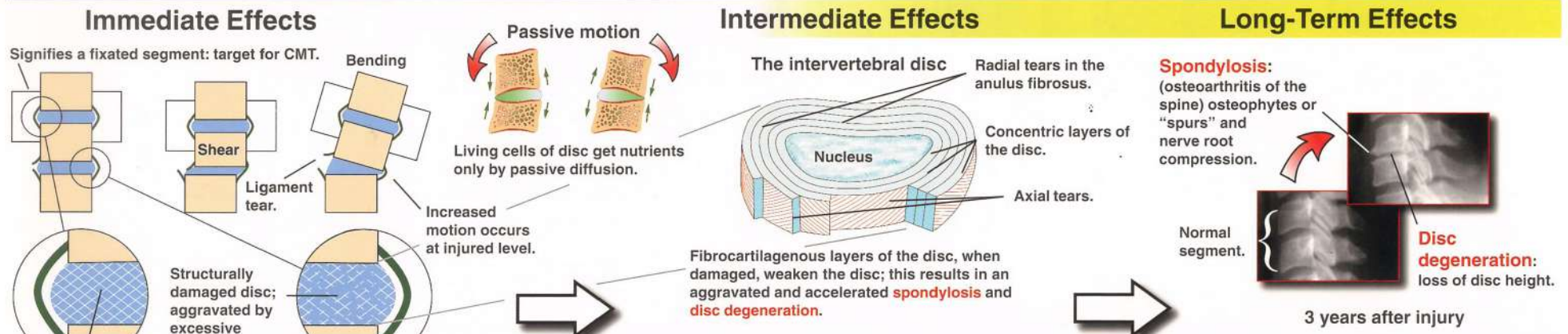


Why Chiropractic Treatment?

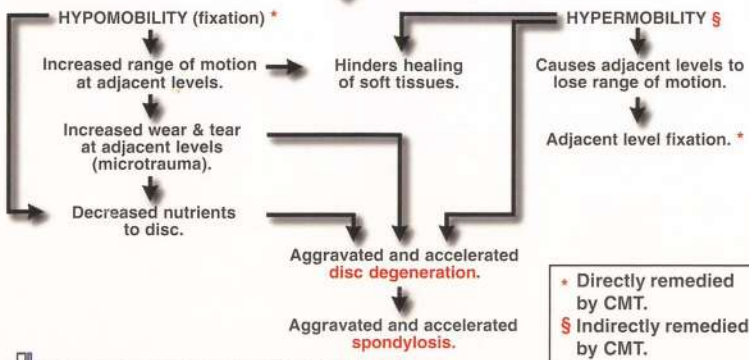


Consequences of no CMT:



Treatment (TX) Guidelines for Chiropractic Care*

Grade	Description	TX Duration	TX Number	Potentially Complicating Factors
Grade 1	Minimal injury; no limitation of ROM, no neurological symptoms.	< 10 weeks	< 21	<ul style="list-style-type: none"> Advanced age Metabolic disorders Congenital anomalies of the spine Developmental anomalies of the spine Degenerative disc disease Disc protrusion/herniation Spondylosis and/or facet arthrosis Arthritis of the spine AS or other spondylarthropathy Prior cervical or lumbar spine surgery Prior vertebral fracture Osteoporosis or bone disease Spinal or foraminal stenosis Paraplegia/tetraplegia Prior spinal injury; scoliosis
Grade 2	Slight injury; limitation of ROM, no neurological symptoms (findings).	< 29 weeks	< 33	
Grade 3	Moderate injury; limitation of ROM, some ligamentous injury, neurological symptoms (findings).	< 56 weeks	< 76	
Grade 4	Moderate to severe injury; as above plus ligamentous instability, and fracture or disc injury.	May require lifetime care.	May require lifetime care.	
Grade 5	Severe injury; requires surgery.	Post-surgical.	Post-surgical.	



* TX numbers and durations may need extending if complicating factors are present. In some cases, lifetime care will be required.